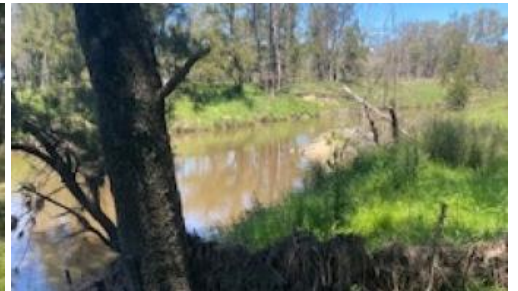


Sold



390 Gwydir River Road Torryburn, Inverell



Lifestyle and living in a quiet location!

This block is located where the picturesque Gwydir River meets the permanent Roumalla Creek, 69kms from Inverell and 29kms from the town of Bundarra. This lifestyle and hobby farmers block on 38 hectares can be utilized for fishing, hunting and camping. With good super history, there are five immaculate paddocks full of pasture with new ring-lock fencing for both the boundary and internal fences along with working stockyards including a crush. A mixture of granite and loamy soils with yellow-box, stringy bark and gum trees make up this block of land.

The dwelling on this block is completely self contained and functions on a solar system. It includes a wood fire, vanity and shower, bedroom, tidy kitchen and a BBQ area.

This land is the ideal peaceful location that has had all the hard work put into it.

The above information provided has been furnished to us by the vendor/s. We have not verified whether or not that information is accurate and do not have any belief in one way or the other in its accuracy. We do not accept any responsibility to any person for its accuracy and do no more than pass it on. All interested parties should make and rely upon their own inquiries in order to determine whether or not this information is in fact accurate.

| | |
|----------------------|-------|
| Price | Sold |
| Property Type | Rural |
| Property ID | 83 |

Agent Details

Annabelle Gleeson - 0411 854 689

Office Details

Annabelles Inverell
0411 854 689

