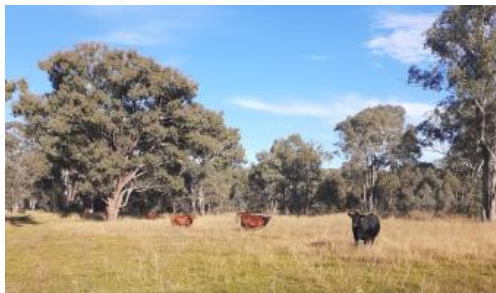


Sold



906 Grove Road, Inverell



Reduced, Sell, Sell, Sell Vendors Ready To Go! WIWO

Motivated vendors - 38km from Inverell, 18km from Bundarra. 315 acres with 120 acres cultivation, 5 acres irrigation. Spacious 4 bedroom barn style home set in a picturesque valley, open plan lounge, dining & kitchen, office, new bathroom with shower, bath & separate toilet.

8m x 22m Colourbond shed home, 3.5kw Solar System, 18m x 7m hay shed, 15m x 9m storage shed, timber cattle yards, Clipex Cattle crush & headbale. Small set of shepyards. Endless water, 4 dams, 2 spring fed, frontage to Sandy Creek.

Vendors happy to sell machinery with property! WIWO.

- * 434 International Tractor
- * 5 Foot slasher
- * Small Massey Ferguson haybaler
- * Haymaking gear mower and rake.
- * 3 Furrow malbourough plough
- * Superspreader
- * Round hoppers

All machinery in good working order.

Raino is a productive property with ongoing potential. Current owners have run approx 45Cows & calves and 500 sheep. Red clover and native pastures, fenced

 4  1  2

Price	Sold for \$610,000
Property Type	Rural
Property ID	43

Agent Details

Annabelle Gleeson - 0411 854 689

Office Details

Annabelles Inverell
0411 854 689

